



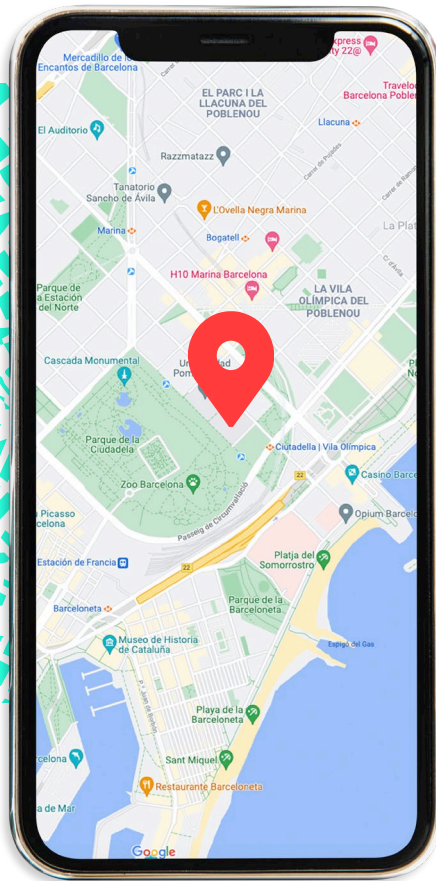
MERCAT DEL PEIX

Research and innovation for Planetary Wellbeing in Barcelona

The Ciutadella of Knowledge

A scientific, cultural, and urban development initiative intended to turn the Ciutadella Park into a large, sustainable knowledge space, better integrated with its surroundings and open to the seashore.





About the Ciutadella of Knowledge

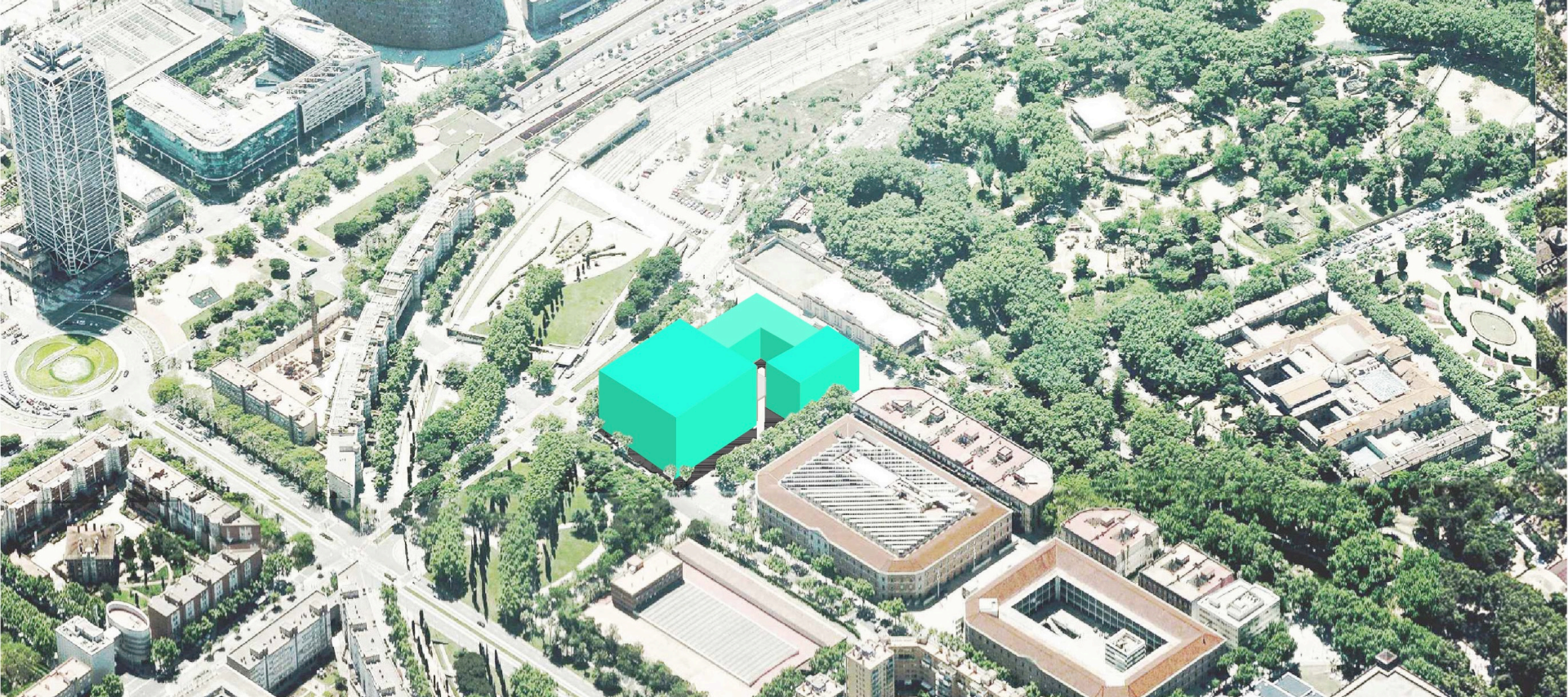
An area of about 500,000 m².

A new research and innovation complex in downtown Barcelona.

The Mercat del Peix is one of its first components.

An initiative promoted by:





The Mercat del Peix

What is the Mercat del Peix?

A new research and innovation complex focusing on biomedicine, biodiversity and planetary wellbeing.



Area
45,000 m²



1,200
scientific staff

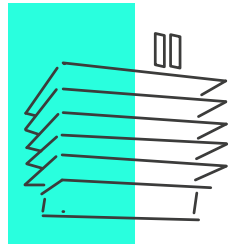


Investment
€103.8 M

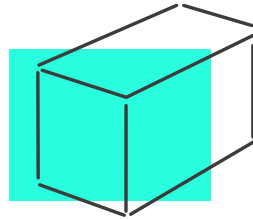


Opening
2025

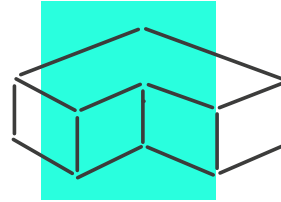
3 research centres



- 1 -



- 2 -



- 3 -





BiomedBIST

A new building for
BIST research groups
in biomedicine.

Research and innovation in precision medicine



Area
24,700 m²



800
research staff



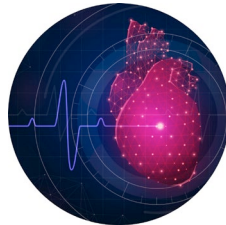
Investment
€54.9 M



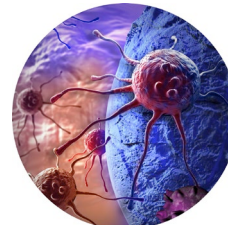
Barozzi Veiga's
project



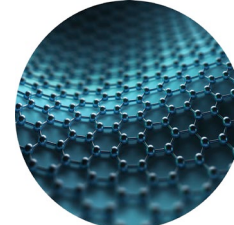
Genomics



Biomedicine



Bioengineering



New materials

Precision medicine

Learning the mechanisms and genetic foundations of each disease.

Applying personalized medical treatments.

Developing new diagnostic tools and innovative therapies.

Curing highly prevalent diseases (e.g., cancer, diabetes) and rare diseases.

Responding to social challenges such as healthy ageing.





INSTITUT de
BIOLOGIA
EVOLUTIVA **ibe** CSIC
upf.

New IBE headquarters

Research centre in the
study and conservation of
biodiversity.



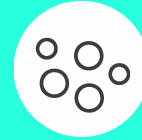
Area
6,500 m²



250
research staff



Investment
€11.5 M



35 research
groups



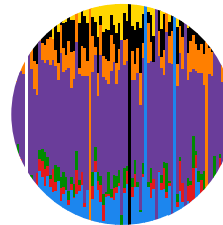
Biodiversity



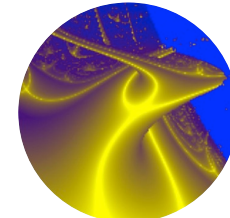
Functional genomics
and evolution



Comparative and
computational
genomics



Population
genetics



Complex
systems

Discovering life Unravelling evolution Conserving biodiversity



Understanding
the evolutionary
mechanisms
that generate
biodiversity.



Promoting its
conservation.



Centre for research and innovation on planetary wellbeing

It will host its own researchers and visiting scholars who will conduct research on and for Planetary Wellbeing.



Area
7,300 m²



150
research staff



Investment
€15.1 M



Planetary health



Complex systems
and data science



Artificial
intelligence



The economics
and governance
of climate change



Loss of
biodiversity



Global governance
and law

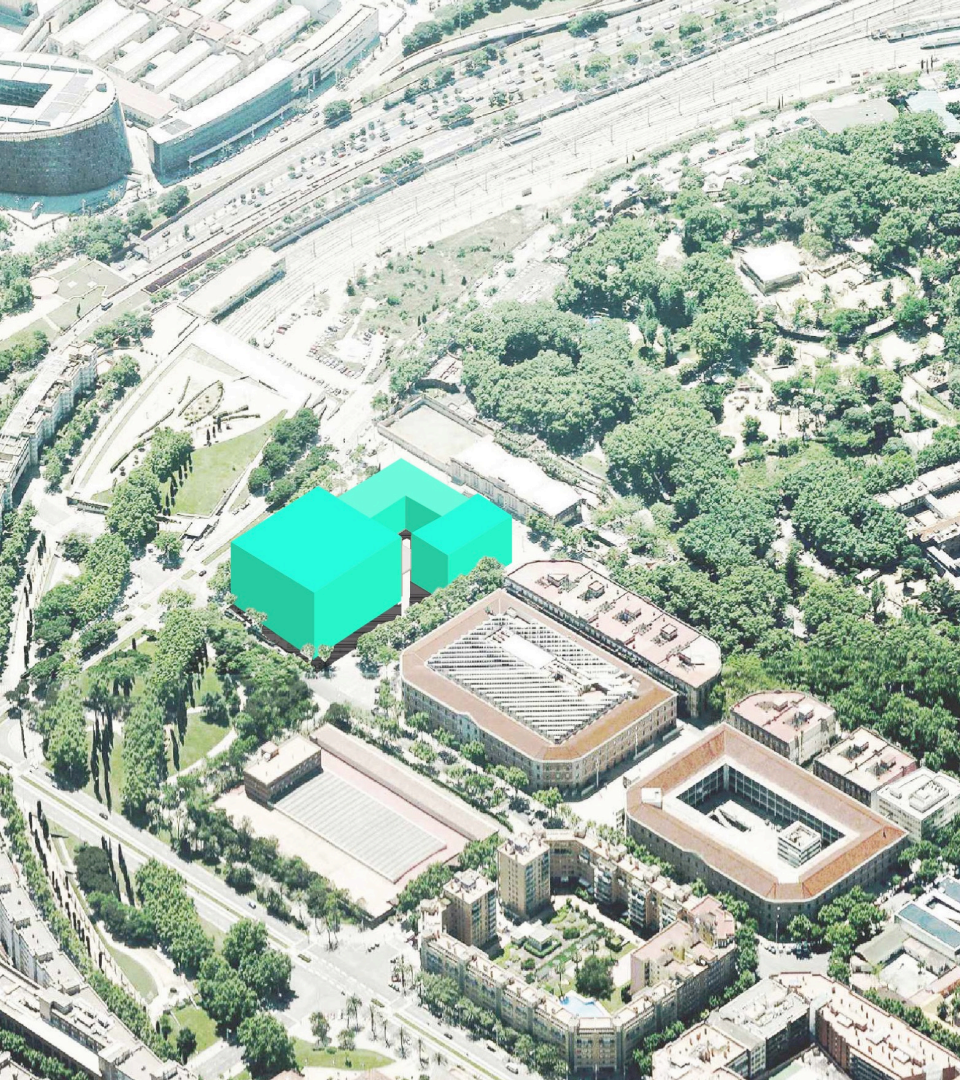


**Interdisciplinary research to improve
the health and wellbeing of people,
society and the planet.**

PROJECT INCORPORATES THE UNITED NATIONS SUSTAINABLE DEVELOPMENT GOALS (SDGs)



**SUSTAINABLE
DEVELOPMENT GOALS**



A scientific project promoted by:



Universitat
Pompeu Fabra
Barcelona



Barcelona Institute of
Science and Technology

INSTITUT de
BIOLOGIA
EVOLUTIVA



CSIC
UPF



UNIVERSITAT de
BARCELONA



CSIC
CONSEJO SUPERIOR DE INVESTIGACIONES CIENTÍFICAS



Ajuntament
de Barcelona



Generalitat de Catalunya
Departament de Recerca
i Universitats

With the collaboration of:

B:SM

Barcelona
de Serveis
Municipals



INCASÒL
Institut Català
del Sol

More information:

www.mercatdelpeix.eu